



STORMSHIELD

Collaborative Security



STORMSHIELD
NETWORK SECURITY



STORMSHIELD
ENDPOINT SECURITY



STORMSHIELD
DATA SECURITY





STORMSHIELD

Our world is **evolving**

DIGITALIZATION

60% of companies have introduced a digital strategy

WIDESPREAD USE OF NEW MEDIA

67% of companies have a favorable view of new cloud applications

INCREASE IN VOLUME OF DATA EXCHANGED

76% of companies have opened their information systems
to third parties



STORMSHIELD

And so is **cybercrime**

ATTACKS ARE ON THE UP

57% of companies were
victims of cybercrime attacks in 2016

—

**AND INCREASINGLY
SOPHISTICATED**

—

**AND INCREASINGLY HARDER
TO DETECT**



STORMSHIELD

Protect yourself!

Rethink comprehensive protection strategies for your infrastructure



PHYSICAL NETWORKS



VIRTUAL CLOUD NETWORKS



**CONNECTED INDUSTRIAL
INFRASTRUCTURES**



STORMSHIELD

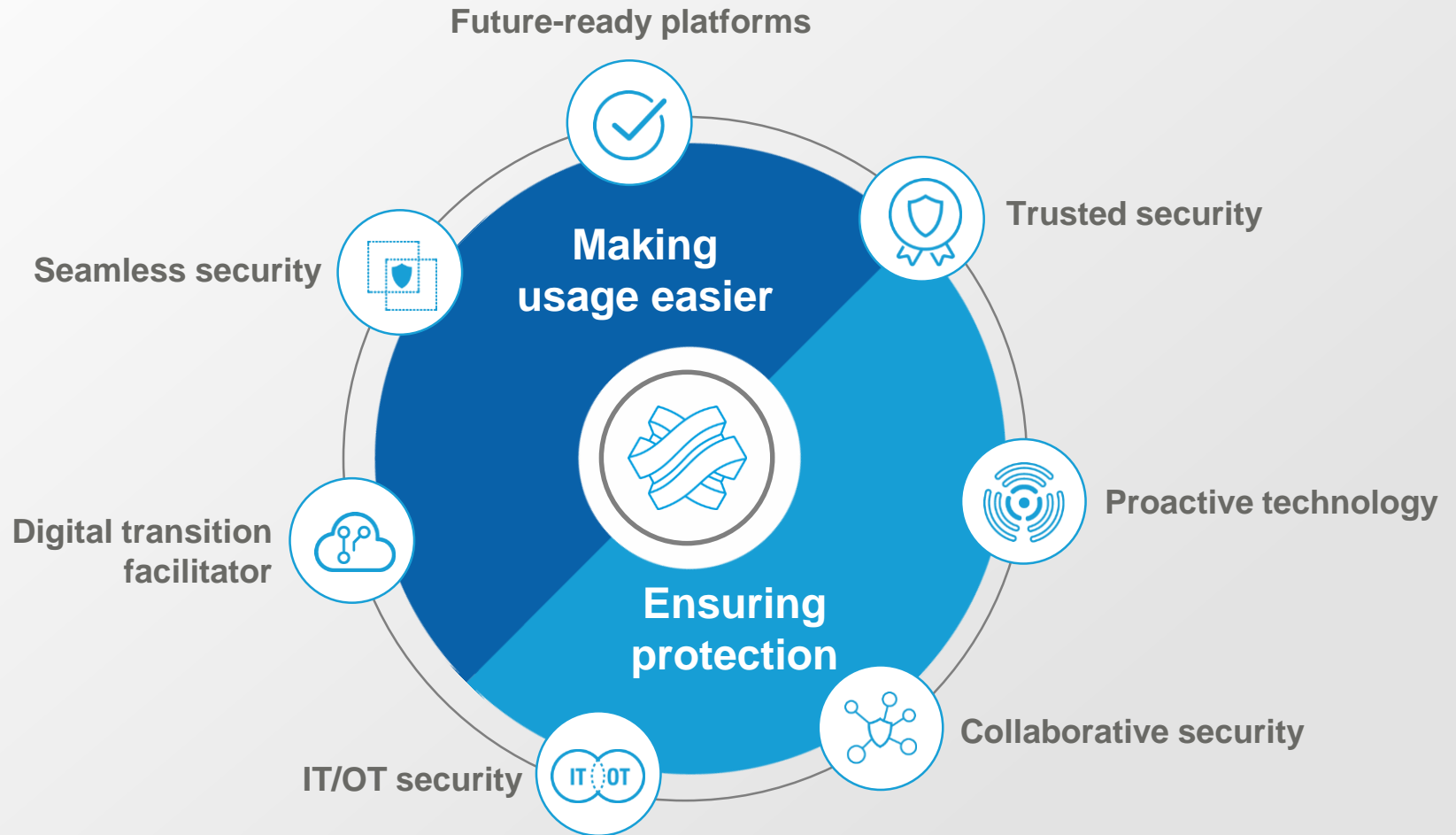
Our role

**TO PROVIDE AN EASIER
SECURITY EXPERIENCE**

**TO ANTICIPATE PROBLEMS
AND
SOLVE THEM BEFORE
THEY APPEAR**



STORMSHIELD





STORMSHIELD

About us

**EUROPE'S GLOBAL MARKET
LEADER FOR IT AND OT
INFRASTRUCTURE PROTECTION**



STORMSHIELD

Our history is firmly anchored in cybersecurity

2000

Creation of Arkoon (FR)
First UTM on the market

1998

Creation of Netasq (FR)
First firewall to be integrated into an IPS

More than 17 years of expertise
in cybersecurity

2012-2013

Acquisition and merger of
Arkoon and Netasq by
Airbus Defence & Space

2014

Launch of Stormshield brand
and product ranges



STORMSHIELD



STORMSHIELD

Stormshield

Wholly-owned subsidiary of Airbus CyberSecurity

AIRBUS



STORMSHIELD

Unrivalled **trust**

The highest levels of European certification



EU RESTRICTED



NATO CLOUD



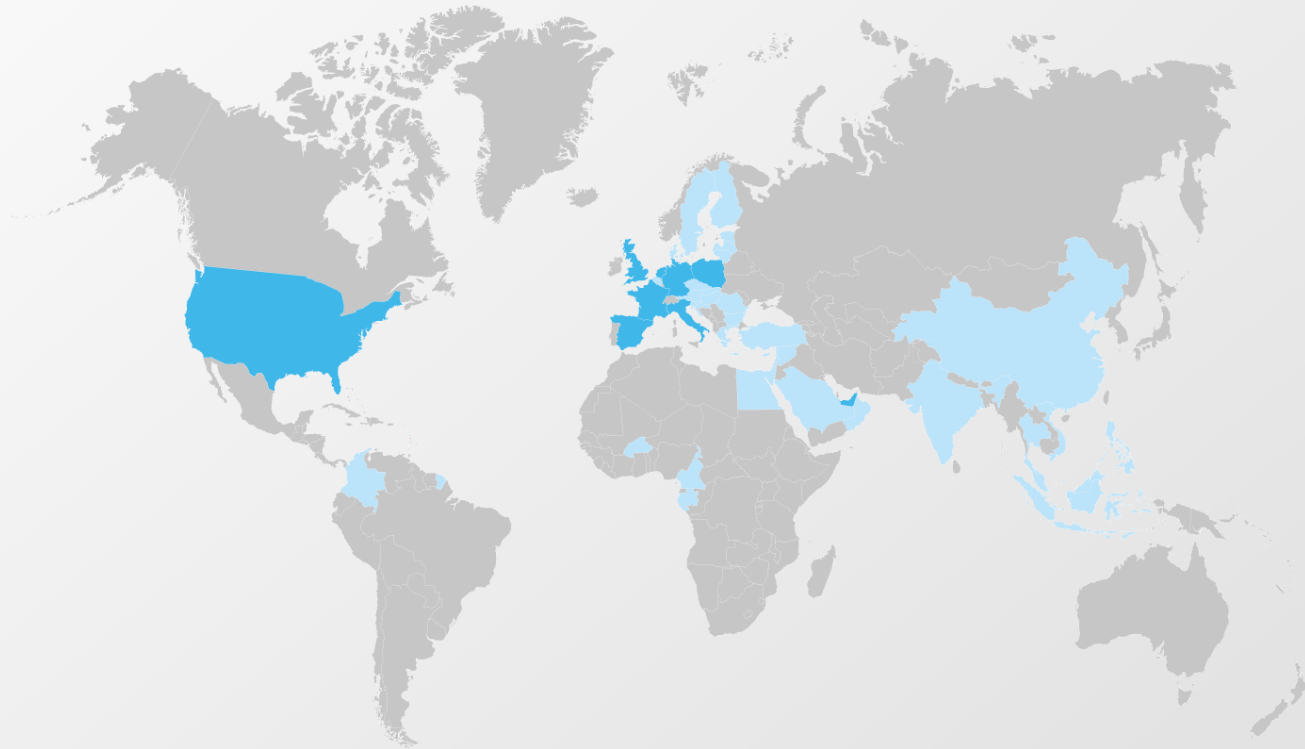
COMMON CRITERIA



STORMSHIELD

Our commitment

Think global, act local



SALES
OFFICES

INTERNATIONAL
PARTNERS



+900

active partners



40

countries



+1000

certifications each year



STORMSHIELD

Our vision

**A COMPREHENSIVE SOLUTION
FOR SEAMLESS SECURITY**



STORMSHIELD

Smash open the silos!

Develop a collaborative environment for your security solutions at every level – ensuring real-time protection for your digital assets



- 1 3 complementary areas of expertise
- 2 End-to-end protection
- 3 Detection of security gaps for proactive protection
- 4 Interaction strengthened through the IT ecosystem
- 5 Dynamic security policy



STORMSHIELD

Security that is **collaborative & integrated**



Active member of
the **cybersecurity**
community



Robust security data
generated by the installed
base of our solutions



Ongoing analysis of this data by
our team of experts in order to
identify new threats



**Dynamic provision
of countermeasures**
with full
transparency



STORMSHIELD

Technology partners providing us with support





STORMSHIELD

Our responsibility

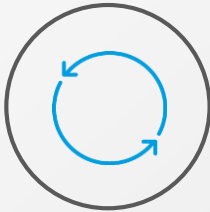
**UNCOMPROMISED CONTINUITY IN OPERATIONS
AND DATA PROTECTION**



STORMSHIELD

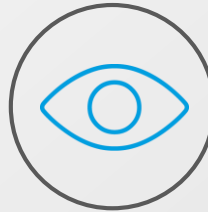
By your side

We support and protect your **organizations**,
employees, and **customers**



Compliance

Support for organizations in
their approach **to data
protection and sensitive
assets**
(both corporate
and staff-related)



Vigilance

Anticipation and
containment of threats as
part of a **proactive
approach**



Security

Protection against
known and emerging
threats, ensuring **the
best possible
security**



STORMSHIELD

Our comprehensive solution

**A COMPREHENSIVE SOLUTION
FOR RELIABLE PROTECTION**



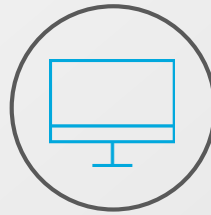
STORMSHIELD

Proactive security provision from end to end, ensuring protection



Networks

Stormshield Network
Security



Workstations

Stormshield Endpoint
Security



Data

Stormshield Data
Security



STORMSHIELD

Network protection

Stormshield Network Security



PHYSICAL
NETWORKS



Physical appliances



VIRTUAL
CLOUD
NETWORKS



Virtual appliances



MOBILE
TERMINAL DEVICES



WiFi appliances



CONNECTED
INDUSTRIAL
INFRASTRUCTURES



Industrial appliances

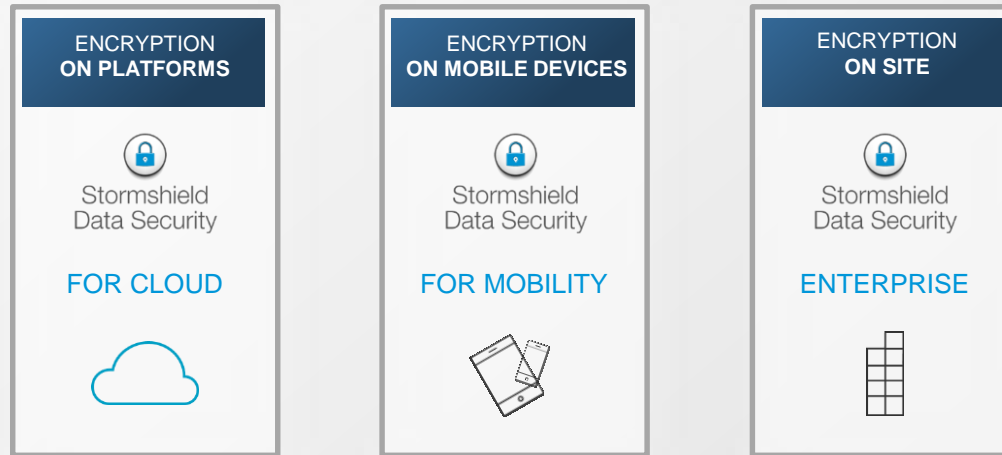
LEADING TRUSTED SOLUTION FOR COMPREHENSIVE PROTECTION



STORMSHIELD

Data protection

Stormshield Data Security



ENCRYPTION EVERYWHERE





STORMSHIELD

Workstation protection

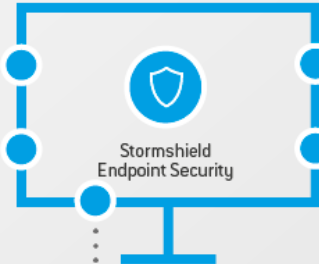
Stormshield Endpoint Security

ZERO-DAY PROTECTION

- Proactive protection without a signature base
- No updates needed for offline environments
- Protection against today's and tomorrow's sophisticated attacks

SECURITY POLICY

- All security requirements are managed from a single policy
- Modularity of security rules depending on context or membership in a group
- Simplified deployment and management of the security policy



PROTECTION AGAINST ILLEGAL OR MALICIOUS USE

- Protection against users' malicious actions
- Exfiltration of sensitive data prevented
- Prevention of usage that fails to comply with the security policy (connection of personal telephones and unsecure Wi-Fi for example)



COMPREHENSIVE REPORTING

- Comprehensive reports thanks to logs, especially on the use of removable devices or Wi-Fi
- Thorough and in-depth analysis of threats (potentially infectious USB keys, critical workstations, critical services or processes on the OS that may become victims of attacks, etc.)



GUARANTEED SERVICE CONTINUITY

- Zero impact on the continuity of your business
- Attacks blocked without user intervention
- Information reported in the central administration console



STORMSHIELD

Unique

WHY
YOU SHOULD CHOOSE US



STORMSHIELD

Solutions tailored to *your* size



SMALL
BUSINESSES



MEDIUM-SIZED
ENTERPRISES



LARGE
CORPORATIONS

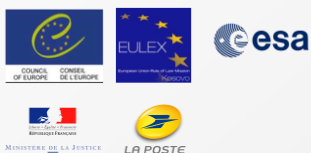


STORMSHIELD

Solutions tailored to your sector

15,000+ customers

PUBLIC SECTOR



HEALTH



EDUCATION



DEFENSE



INDUSTRY



SERVICES



FINANCE/INSURANCE



MSSP/SERVICE PROVIDER



RETAIL



Over **15 000** customers

Relax

Your company is protected



STORMSHIELD

www.stormshield.com

